



Hong Kong



**A vibrant
city**



Hong Kong





Hong Kong: Where East Meets West in a Dazzling Urban Symphony

A glittering metropolis of skyscrapers standing shoulder-to-shoulder with misty mountains, Hong Kong is a place of thrilling contrasts. This Special Administrative Region of China blends Cantonese tradition with global influences, creating a dynamic culture where ancient temples sit beneath neon signs, and British afternoon tea coexists with chaotic dim sum parlors.

The City That Never Sleeps

Hong Kong's energy is palpable - from the symphony of clinking teacups and sizzling woks in dai pai dong open-air eateries to the rhythmic clatter of the MTR subway whisking millions daily across its efficient network. The harborfront skyline, illuminated nightly by the Symphony of Lights show, reflects off Victoria Harbour like liquid gold.

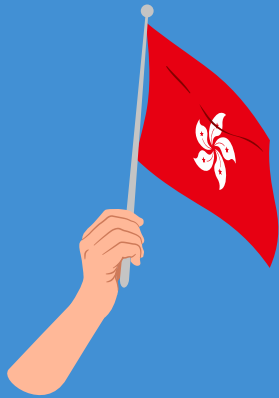
Nature's Surprise

Beyond the urban jungle, 70% of Hong Kong is green space. Hike dragon's back trail to panoramic views, find secluded beaches on outlying islands, or spot pink dolphins in the Pearl River Delta. The Ngong Ping 360 cable car reveals this dramatic landscape in all its glory.

Why Visit?

Hong Kong doesn't just welcome you - it electrifies your senses. Whether you're bargaining for jade in Temple Street Night Market, watching the sunrise from Victoria Peak, or discovering hidden speakeasies behind unmarked doors, this city promises unforgettable moments at every turn.

"Hong Kong is not a city, but a world unto itself." - Local Proverb



Visa Guidelines

1. No visa is required for any purpose if you hold the following travel documents:
 - Valid HKSAR Passport
 - Valid Hong Kong Re-entry permit (From Chinese Mainland Macao only)
 - Valid Hong Kong Document of Identity for Visa Purposes
 - Travel document bearing “Holder’s eligibility for Hong Kong permanent identity card verified.”
 - Travel document bearing “The holder of this travel document has the right to land in Hong Kong.”
 - Hong Kong Permanent Identity Card
 2. Visit the Hong Kong Immigration Department website for specific requirements based on your country.
 - Prepare necessary documents: passport, invitation letter, hotel booking confirmation, and the conference registration.
 - Apply via online portal
 - <https://www.immd.gov.hk/eng/services/visas/visit-transit/visit-visa-entry-permit.html>
- If you need advice on any individual cases, please address your enquiries to the Immigration Department of Hong Kong.



Conference Venue

Established in 1994, Hong Kong City University (CityUHK) is a leading institution renowned for its excellence in education, research, and community engagement. Located in the vibrant city of Hong Kong, CityUHK has quickly grown into a top university with strong programs in the humanities, social sciences, and arts.

The 7th Shakespeare Conference at CityUHK brought together scholars, researchers, and enthusiasts from around the world to explore new perspectives. The conference will be held in June at CityUHK's main campus, providing an inspiring environment for academic exchange.

Beyond its academic pursuits, CityUHK actively promotes cultural dialogue and interdisciplinary research, especially in literature and performing arts. The university is committed to fostering global connections and nurturing innovative ideas that address current issues. It encourages both students and faculty to engage in community service and efforts to preserve culture, reflecting its mission to make a meaningful contribution to society.



CityuHK Map



Catering Outlets
on Campus

校園開放時間:

早上七時至晚上十一時正
Campus Opening Hours:
7:00 a.m. to 11:00 p.m.

- | | | | |
|---|---------------|--|---------------|
| 1 Academic 1 | 學術樓 (一) | 16 Academic 2 | 學術樓 (二) |
| 2 Cheng Yick-chi Building | 鄭翼之樓 | 17 Academic 3 (Construction-in-progress) | 學術樓 (三) (興建中) |
| 3 Fong Yun-wah Building | 方潤華樓 | 18 Footbridge | 行人天橋 |
| 4 Mong Man-wai Building | 蒙民偉樓 | 19 Student Residences | 學生宿舍 |
| 5 Academic Exchange Building | 學術交流大樓 | 20 Run Run Shaw Creative Media Centre | 邵逸夫創意媒體中心 |
| 6 To Yuen Building | 桃源樓 | 21 Chak On Centre | 澤安中心 |
| 7 Amenities Building | 康樂樓 | 22 Inno Centre | 創新中心 |
| 8 Swimming Pool | 游泳池 | 23 Jockey Club Environmental Building | 賽馬會環保樓 |
| 9 Hu Fa Kuang Sports Centre | 胡法光運動中心 | 24 Festival Walk Offices | 又一城辦公室 |
| 10 New Teaching Facilities (Renovation-in-progress) | 新教學設施 (工程進行中) | 25 Tai Chi Yuen | 德智苑 |
| 11 Nam Shan Yuen | 南山苑 | | 聯校運動中心 |
| 12 Hillside Trail | 山邊小徑 | | |

Travel



THE MAN MO TEMPLE IS A HISTORIC, ATMOSPHERIC TEMPLE DEDICATED TO MAN (GOD OF LITERATURE) AND MO (GOD OF WAR), KNOWN FOR ITS GIANT, SMOKY INCENSE COILS, INTRICATE CARVINGS, AND ITS FUNCTION AS A CULTURAL HUB WHERE LOCALS STILL WORSHIP AND SEEK BLESSINGS FOR SUCCESS, CONTRASTING WITH THE BUSTLING CITY OUTSIDE.

MTR STATION: SHEUNG WAN STATION A2 (10 MINS WALK)
HOURS: 8 A.M. TO 6 P.M.
COST: FREE



TEN THOUSAND BUDDHAS MONASTERY IS A HILLSIDE TEMPLE COMPLEX IN SHA TIN, HONG KONG, KNOWN FOR ITS NEARLY 13,000 BUDDHA STATUES AND SERENE ATMOSPHERE. 500 LIFE-SIZED, GOLDEN STATUES OF ARHATS AND HISTORICAL PAGODAS AND PAVILIONS GIVING UNFORGETTABLE EXPERIENCES FOR TOURISTS.

MTR STATION: SHA TIN STATION EXIT B (15-20 MINS WALK)
HOURS: 9 A.M. TO 5 P.M. (CHECK FOR CLOSURES).
COST: FREE



The Peak is the island's highest point, famous for unrivaled panoramic views of Victoria Harbour, the city's skyscrapers, Kowloon, and surrounding islands, accessible via the historic Peak Tram.

Route No. 15 (Citybus) Normal
Daily: 06:15am to 12:15am (from Central)
Mon - Sat (except Public Holidays): 06:30 am to 1:00 am (from the Peak)
Sun & Public Holidays: 7:00 am to 1:00 am (from the Peak)
Frequency: 7 - 15 minutes

Route No. X15 (Citybus)
Central Pier 6 to The Peak
Sat - Sun & Public Holidays: 10:00 am (from Central (Pier 6))
Sat - Sun & Public Holidays: 6:00 pm (from the Peak)

Travel



Ocean Park is a renowned animal theme park, oceanarium, and amusement park located in Wong Chuk Hang. Key features include animal exhibits and several amusement rides.

Mtr Station: Ocean Park Station Exit B

Hours: 10 a.m. to 6:30 p.m.
Cost 538 hkd (Adult)
269 hkd (Child)



Hong Kong Disneyland is well-known for its amazing interactions with different and the Hong Kong-exclusive Mystic Point and Grizzly Gulch.

Mtr Station: Disneyland Resort Station

Hours: 10:30 a.m. to 8:30 p.m.
Cost: 669 - 939 hkd (Adult)
449 - 705 hkd (Child/Elder)



Lan Kwai Fong is Hong Kong's iconic, vibrant nightlife district in Central, known for its dense concentration of over 100 bars, restaurants, and clubs, attracting locals, expats, and tourists for dining, drinking.

MTR STATION: CENTRAL STATION EXIT D2



Food



Hong Kong: A Food Lover's Paradise Must-Try Dishes for First-Time Visitors

Welcome to Hong Kong, where every bite tells a story! From sizzling street food to Michelin-starred dim sum, this city is a culinary adventure. Here's your ultimate guide to the flavors you can't miss:



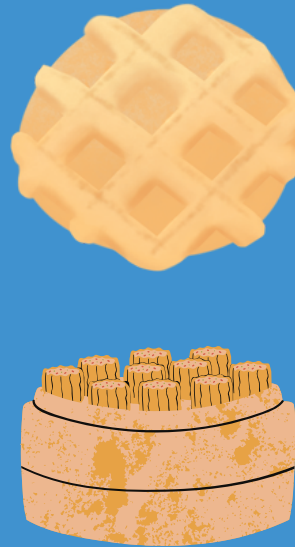
1. Dim Sum (点心)

The Heart of Cantonese Cuisine

Where to Try: Lin Heung Tea House (Central), Tim Ho Wan (multiple locations)

Must-Order:

- Har Gow (虾饺): Translucent shrimp dumplings with delicate, chewy wrappers.
 - Char Siu Bao (叉烧包): Fluffy steamed buns filled with sweet-savory BBQ pork.
 - Siu Mai (烧卖): Open-topped pork-and-shrimp dumplings crowned with crab roe.
- Pro Tip: Pair with pu-erh tea and say "yum cha" (drink tea) like a local!



2. Egg Waffles (鸡蛋仔)

Hong Kong's Sweet Street Icon

Where to Try: Mummy Pancake (Tsim Sha Tsui), street stalls in Mong Kok

Flavors to Try:

- Classic: Crispy outside, custardy inside.
- Matcha or Chocolate: Modern twists on the beloved original.
- Fun Fact: These bubble-shaped waffles are Instagram gold!



3. Pineapple Bun (菠萝包)

No Pineapple, All Magic

Where to Try: Kam Wah Cafe (Prince Edward)

Don't Miss:

- The crackly, sugar-crusted top (resembling pineapple skin).
- Order it *"with butter"* (菠萝油) for a melty, salty-sweet surprise



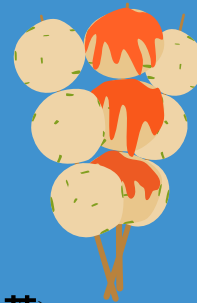
4. Wonton Noodles (云吞面)

Slurp-Worthy Comfort

Where to Try: Mak's Noodle (Central), Tsim Chai Kee (Central)

What Makes It Unique:

- Springy egg noodles in golden shrimp/pork broth.
- Wontons are plump with whole shrimp—bite carefully!

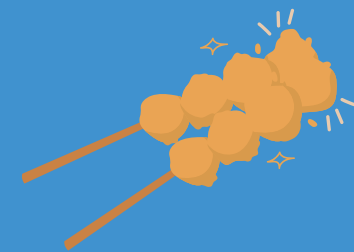


7. Milk Tea (奶茶)

Hong Kong's Caffeinated Staple

Where to Try: Lan Fong Yuen (Central), Australian Dairy Company (Jordan)

Secret: Strapped through silk stockings for ultra-smooth texture. Served hot or iced —"gaai daai" (less sweet) if you prefer bitterness.



Travel Tips

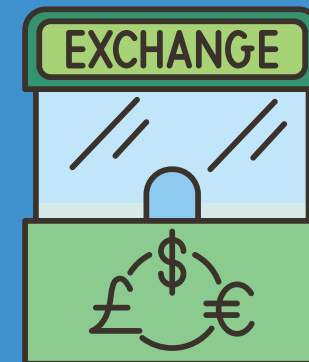


Language

- Cantonese is the local language but English is widely spoken. Learning basic Cantonese phrases can be helpful.

Currency

- Hong Kong Dollars (HKD), good for local markets.
- Credit cards widely accepted in hotels and restaurants.
- Octopus Card is recommended for convenience, it's the primary MTR and bus pass.
- AlipayHK is also accepted in many places.



Travel Tips



Safety

- Hong Kong is very safe, usual precautions recommended in crowded areas.

Connectivity



- **Wi-Fi:** Widely available in malls, hotels, and cafes.
- **So SIM Cards:** Its a prepaid SIM cards with no monthly contracts, admin fees, or hidden charges, reliable prepaid options in Hong Kong, with packages starting around \$33 HKD for 50GB of data. Can buy at the airport or telecom shops, with options for tourists data plans.

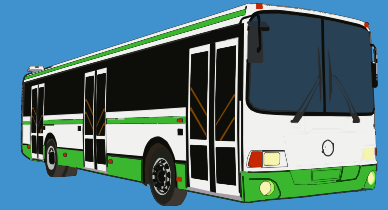
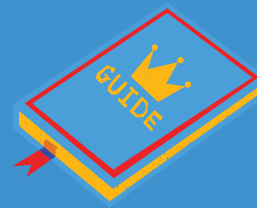
Additional Tips



- **Peak Hours:** MTR and buses can be crowded during rush hours (7-9 AM, 5-7 PM).
- **Weather Prep:** Hong Kong is hot, humid, and rainy in June—carry water, umbrellas, and wear suitable clothing.
- **Explore Smartly:** Use local apps like Google Maps, MTR Mobile, Citybus & AlipayHK.



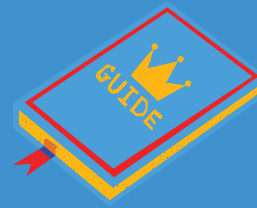
Transportation guide



- **MTR:** Fast and easy to get close to the campus from anywhere in Hong Kong. Just walk about 10 minutes from Kowloon Tong Station Exit C2 to the university main campus. (Guide will be provided).
- **Buses & Minibuses:** Many routes go to the university. They're cheap and good if you want to see different parts of Hong Kong.
- **Tram (Ding Ding):** A fun, old-style double-decker tram on Hong Kong Island. Cheap and offers nice city views.
- **Taxis:** Convenient and comfortable. Good if you have luggage or want to go directly to your destination quickly.
- **Ferries & Star Ferries:** A scenic way to cross the harbor. It's quick, cheap and gives you great views of the city skyline.



Transportation guide



Uber

Uber

It operates efficiently in Hong Kong and is a reliable option for late-night travel, especially when public transport might be winding down.

1. Pre-Arrival Setup

- **Download the App:** Ensure the Uber app is downloaded and updated before your trip
- **Payment Method:** Set up your preferred payment method (credit card, PayPal) within the app
- **Connectivity:** You will need mobile data or Wi-Fi to book a ride



2. How to Book an Uber in Hong Kong

- **Open the App**
- **Set Destination:** Tap the "Where to?" box and enter the name or address of your hotel
- **Confirm Pickup Location**
- **Choose Ride Type:** Select the type of vehicle
- **Check Fare and Book**
- **Wait for Driver:** You will see the driver's name, license plate number, and the car type
- **Identify the Vehicle:** Look for the license plate number provided in the app
- **Verify:** Before getting in, quickly confirm the driver's name and the destination address

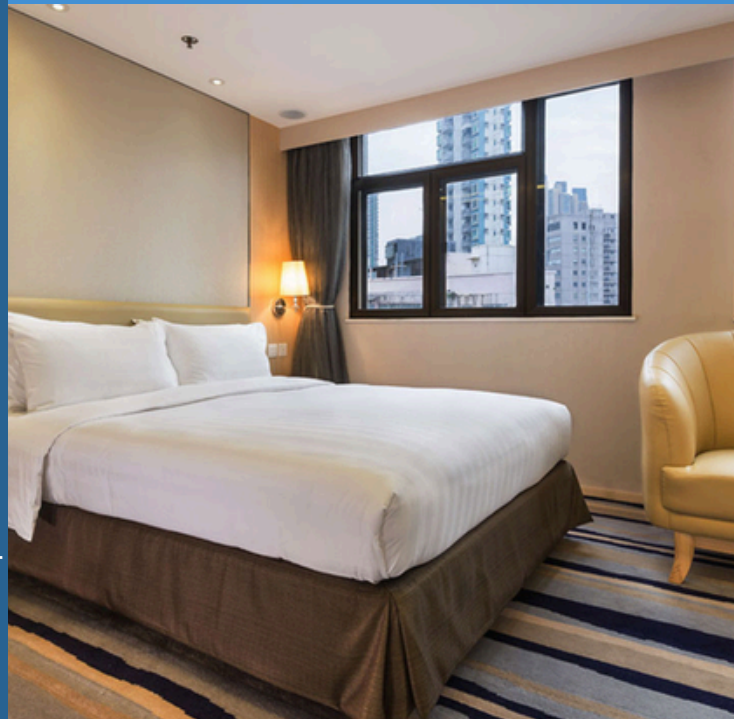
HOTEL RECOMMENDATIONS

Fellow Shakespeareans, welcome to Hong Kong! To sum up this travelling brochure, here is the most comprehensive Hong Kong hotel guide curated for your needs. We know that finding an optimal base for reflection (and rest!) is crucial to an enriching and productive conference experience in Hong Kong. So, to help you make the best of your time here, this guide curates a selection of hotels that will definitely meet at least one of your needs. Whether you are on a budget or got a few bucks to spend, this guide has you covered!

From the cost-effective, “dystopian” vibes of Mong Kok, to the sophisticated luxury of having business suites atop major transit hubs (Hong Kong-exclusive!), or to a more serene, artistic atmosphere near the West Kowloon Cultural district (where parts of the conference will be held), every recommendation here prioritizes a seamless MTR connectivity that can connect you to anywhere in Hong Kong. Here are 9 hotel recommendations for you to settle in, unwind after a long day of stimulating panels and discussions, and perhaps even find time for some local cultural immersion. Scroll down for more!

BUDGET OPTIONS: (HKD 590 – HKD 700 PER NIGHT)

For scholars seeking high-value budget accommodations with seamless access to City University of Hong Kong, Mong Kok is the place to go! Situated in the heart of Kowloon, Mong Kok is one of most vibrant and energetic places in the city where you can easily experience an authentic “Hong Kong experience”. Beyond its unparalleled transport connectivity—located just minutes from the CityU campus via the MTR—the area is a culinary and cultural hub. From traditional Cantonese 'cha chaan tengs' to world-class shopping districts, Mong Kok ensures that your stay in Hong Kong would be as enriching as the conference itself.



METROPARK HOTEL MONGKOK (~HKD 700):

A highly professional option located at the Prince Edward MTR station (1 stop from CityU). Average nightly rates for June 2026 are approximately HK\$584. It offers a "cozy" interior despite an older exterior.

DORSETT MONGKOK, HONG KONG (~HKD 590):

A contemporary 4-star hotel known for its early bird discounts and free shuttle service. Combining both stylish accommodation and essential business amenities, this hotel perfectly balances urban convenience and quality lodging for travelers.



Kew Green Hotel Mongkok (~HKD 680):

Opened in April 2024, this modern 3-star hotel is a short walk from the Prince Edward MTR station. It provides a clean, contemporary, and professional environment, serving as an excellent, quiet retreat for scholars.



PREMIUM OPTIONS: (HKD 1000+ PER NIGHT)

For scholars looking for a more sophisticated stay, Hong Kong has plenty to offer! In addition to the budget hotels just mentioned, our city also provides a wide range of high-end hotels that blend prestigious hospitality with world-class elegance. Strategically located on top of major transit hubs and shopping malls just minutes away from City University, these premium establishments offer a luxurious transport and shopping experience right above the city's pulse. Guests can enjoy expansive executive suites and refined dining, all designed to facilitate academic productivity and relaxation, ensuring a distinguished conference experience.



ROYAL PLAZA HOTEL (HKD \$1,000+):

5-star hotel located atop Mong Kok East MTR station, connected to the famous MOKO shopping mall. Features an array of facilities such as a large outdoor pool, fitness center, and multiple dining options.



**CORDIS, HONG KONG
(HKD 1,492+):**

A premier 5-star hotel in the heart of Mong Kok, linked to the high end shopping mall Langham place. offers facilities such as a dedicated business center, chuan spa, extensive fitness facilities, and elegant dining.



**Hyatt Regency Hong
Kong, Tsim Sha Tsui
(HKD 1,500+):**

Located within one of the best malls in Hong Kong, the K11 complex. This 5-star hotel offers panoramic harbour views, a 24-hour fitness center, and direct access to Tsim Sha Tsui MTR station, ensuring easy travel to CityU and evening cultural events.





CULTURAL VENUE PROXIMITY OPTIONS

Seeking a quieter retreat away from the vibrant energy of Mong Kok? Look no further than Tsim Sha Tsui. This district offers greater serenity and close proximity to cultural venues like the West Kowloon Cultural District and the Hong Kong Cultural Centre, where key conference events will be held. A wide range of high-quality hotels can be found in this area, where you can have an easier access to higher-end dining spots and premium shopping areas. If you would like to stay away from high-density locations such as Mong Kok, these hotels might be the perfect pick for you.



B P INTERNATIONAL (HKD \$850~):

Extremely popular with academic groups because it is located right next to the Xiqu Centre (traditional opera house) and the Austin MTR station. This professional but affordable stay provides a cheaper option for people looking for better serenity and convenience.



THE ROYAL PACIFIC HOTEL & TOWERS (HKD 1100+):

Located right on the harbor, this accommodation provides scholars with the spectacular signature Hong Kong skyline view while providing seamless connectivity to the conference via the nearby China Ferry Terminal and MTR network.



Mondrian Hong Kong (HKD 1400+):

The perfect hotel if you want a vibrant view of Victoria Harbour. Perfect balance between comfort and convenience with immediate MTR access and close proximity to cultural venues.



CITY U LODGE



About Us

Our last hotel of recommendation is of course - the CityU lodge!

For scholars who want the most convenient and accessible spot - the CityU lodge is for you! Tucked inside the Academic Exchange Building, this cozy retreat offers modern and cozy guestrooms designed to help you recharge after a busy day of ideas.

Before conference activity starts, you can kickstart your morning with coffee at the Lodge Bistro, or take a quick five-minute stroll to the vibrant shops at Festival Walk. The best thing about the CityU lodge is its accessibility!



Lodge Bistro welcomes you with its pleasant and unique aroma and background music, offering breakfast, lunch, dinner and à la carte options!



Our Facility



Gym Room

Our fully-equipped gym room offers full-body workouts can certainly help you maintain your workout regimen!



Laundry Room

A self-service Laundry Room available with 24-hour turnaround self-service.



Swimming Pool

Take a dip in our sparkling pool, perfect for relaxation or a morning swim.



Parking Space

Please contact the CityU English department for visitor parking permits.



Room Details

Unfortunately, our Standard Room and Superior Room are full during the conference period. Please still refer to the Deluxe Room and Suite for your liking!

For scholars coming in groups, please refer to our website below for your reference!



Deluxe Room

HKD1080/ Single occupancy

Cozy and well-appointed, our Deluxe Room offers comfort and style with all essential amenities, ideal for a restful stay.

HKD1180/ Double occupancy




Suite

HKD2980/ Night

Located on the high floors, the spacious Suite with a bedroom and a separate living room provides guests with a comfortable environment.




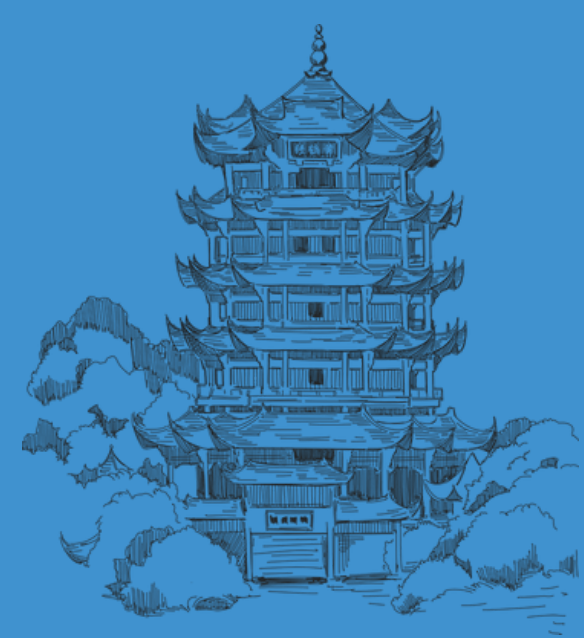
Contact Us

 +852-3442-3600

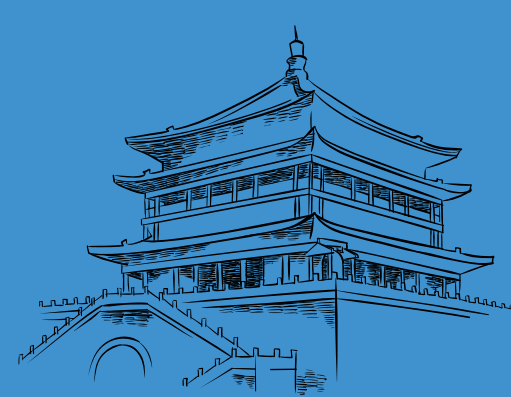
 info@lodge.cityu.edu.hk

 <https://www.lodge.cityu.edu.hk/en>

 Academic Exchange Building, 81 Tat Chee Avenue (facing To Yuen Street), Kowloon, Hong Kong



**See you soon in
Hong Kong!**



香港

